

TYPE MU LU

Features

- Manufactured from electrolytic copper tubing and strip stock
- Compact design
- Range taking
- Re-usable
- V-bottom collar (Type LU)
- Suitable for use in circuits rated 35KV or less, proper high voltage spacing and insulation techniques must be used
- Rated for 90° C

Benefits

- Provides maximum conductivity and strength
- Saves space and reduces installation time
- Permits inventories to be kept to a minimum
- Provides efficient use and flexibility in the field
- Wires are wedged between arched pressure bar and collar establishing positive contact and firm permanent grip
- Application versatility

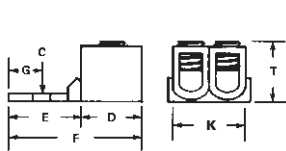


Fig. 1

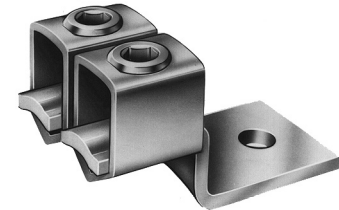
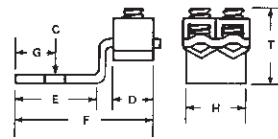


Fig. 2

Catalog Number	Figure Number	Wire Range	Bolt Size	Collar Style	Dimensions								Hex Size
					C	D	E	F	G	H	K	T	
MU-250	1	Two: 250kcmil-6	3/8	Square	25/64	1	1-9/16	2-15/16	7/8	1-1/2	1-5/8	15/16	1/4
MU-350	1	Two: 350kcmil-1/0	1/2	Round	9/16	1-9/16	1-13/16	3-5/16	7/8	1-3/4	1-7/8	1-9/16	3/8
MU-600	1	Two: 600kcmil-4/0	1/2	Round	9/16	1-1/4	1-13/16	3-5/8	7/8	2-1/4	2-1/2	1-3/4	3/8
LU-2	2	Two: 4/0-2	3/8	V-bottom	13/32	1	1-15/16	3-11/32	15/16	1-1/2	1-5/8	1-7/8	7/32
LU-4	2	Two: 350kcmil-1/0	3/8	V-bottom	13/32	1-1/4	1-3/4	3-1/2	21/32	1-3/4	2	2-7/32	5/16
LU-6	2	Two: 500kcmil-1/0	1/2	V-bottom	17/32	1-1/2	2-3/16	4-7/16	27/32	2	2-1/4	2-9/16	5/16

All wire sizes, unless noted otherwise, are American Wire Gauge (AWG)
Tested to UL 486A/B, UL File E6207